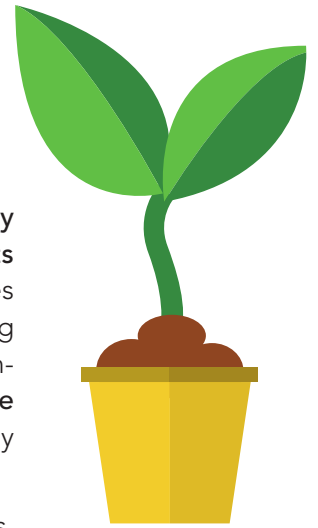


PASS PENNSYLVANIA AGRICULTURAL SURPLUS SYSTEM

The Pennsylvania Agricultural Surplus System (PASS) is an innovative program for accessing healthy and nutritious surplus food produced by Pennsylvania farmers in an effort to share these products with Pennsylvania families in need. Through PASS, the PA Department of Agriculture provides funding to cover the costs associated with harvesting, processing, packaging, and transporting surplus products including fruits, vegetables, eggs, dairy, poultry, pork, beef, and grains (much-needed items at food banks and their agencies) in order to donate those items to the charitable food system. Significant portions of the product obtained through PASS is food that is perfectly nutritious and edible but might otherwise become waste.

In its first year of funding, PASS had a positive impact for Pennsylvania agricultural producers, local food sourcing, and Pennsylvanians in need.



Pennsylvania Department of Agriculture allocates funding for PASS.



Pennsylvania producers use the money to harvest surplus product.



Pennsylvania families in need get access to fresh food!

HOW IS PASS DISTRIBUTED?

Using the State Food Purchase Program formula, all 67 counties receive a PASS allocation. Since 2015, PASS funds have helped in the distribution of 5 million lbs of fresh Pennsylvania-produced food to 67 counties and more than 850,000 households.

WHAT DOES PASS FUNDING COVER?

- Cost for farmers to harvest surplus product from the field
- Cost to package product
- Cost for value added product (ie: processing milk into cheese)
- Transportation to get the product to the food bank

POTENTIAL FOR MORE IMPACT

The current \$1 million appropriation only covers a portion of the nutritious bounty that could be brought into the charitable food system through PASS to help nourish the 1.7 million Pennsylvanians who struggle to put food on the table. For this reason, we are advocating for an increase to \$3 million for this vital initiative.



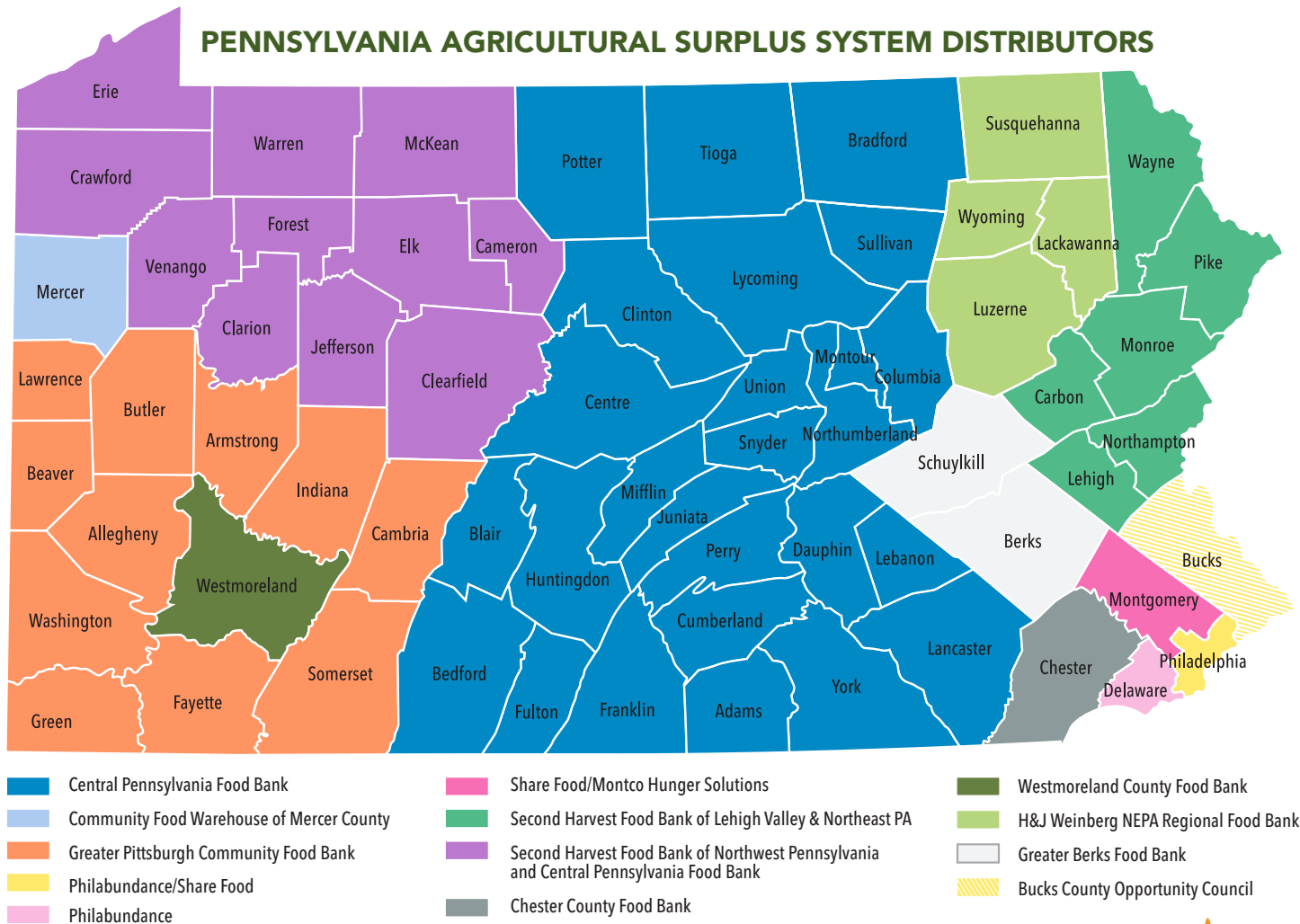
"We now have a mechanism for our farm to recover a portion of the fixed costs associated with packaging and distribution of our donated potatoes. Thus, providing a benefit to our farming operation, while at the same time benefiting the charitable food system and those that it serves. It has truly been a win-win."

- Dave Masser, President, Stermann Masser, Inc.

PASS SUPPLIERS

| | | | | |
|------------------------------|--------------------------|----------------------------------|--------------------------------|----------------------------------|
| Apple Castle, LLC | Eagle Road Produce | Kings Creamery | Meadow Brook Dairy - Erie | Sauder, R.W. Inc. |
| Bear Mountain Orchards, Inc. | Eckert Farms | Kistaco Farm | Merrymead Farm, Inc. | Schneider's Dairy, Inc. |
| Beaver Meadow Creamery, Inc. | Four Seasons Farm Market | Klenz Brothers Farms | Nebraskaland | Scholl Orchards |
| Bechdolt Orchard's | Frankenfield Farm | Kolbs Farm Store | Nell, Jackie and Wes | Sernak Farms |
| Benedict Produce, LLC | Freon Fruit Farms | Kunzler & Company, Inc. | NEMA Food Company | Shady Brook Farm |
| Bream Orchards, LLC | Furmano Foods | Lady Moon Farms | Norman Darling & Sons Farms | Share Nice Roots Farm |
| Brian Sching's Farm | Gerald R. King | Land O' Lakes, Inc. | North American Produce Company | Smith Provision Company, Inc. |
| Broad Wing Farm | Greener Partners | Laubscher Cheese Co., Ltd. | Penn Cheese | Somerset County Mobile Food Bank |
| Burch Farms | Harrisburg Dairies, Inc. | Laurel Vista Inc./DBA | Pennypack Farm | Sunny Harvest, LLC |
| Butter Valley Harvest | Heller Orchards | Lawrence Breauchy | Pete and Gerry's Organic, LLC | Sunset Farm |
| Cedar Dream Farm | Hess Bros. Fruit Company | Leola Produce Auction | Pete's Produce Farm | Swiss Premium - Lebanon |
| Chester County Food Bank | Hess Farms | Living Hope Farms | Pocono Mountain Dairies | Taproot Farm |
| Clarion River Organics | Hillandale Farms | Long Acres Potato Farms | Red Earth Farm | Titusville Dairy |
| Clemens Food Group | Hilltop Greenhouse | Lucas Farms Produce Center, Inc. | Rice Fruit Company | Tri County Produce Auction |
| Copenhaver Produce | HP Hood LLC | M. Levin & Company, Inc. | RinehimerFarms, LLC | Twin Maple Farms |
| Country Gardens Produce | Hunter Brothers | Marshalek's Fruit Farm | Rowlands PA Produce | Valley Farms Dairy |
| Country Hill Produce | IHarvest, Inc. | Mason Farms, LLC 2011 | Ryeco, LLC | Weaver's Orchard, Inc. |
| David Esh | Jim's Farm Produce | Masser Potato Farms | Sandy Ridge Farm | Wexford Farms, Inc. |
| Dawson's Orchards, Inc. | John Schultz and Sons | Mast Farms | | |
| Dries Orchard | King Acre Ranch, LLC | | | |

PENNSYLVANIA AGRICULTURAL SURPLUS SYSTEM DISTRIBUTORS



Fact sheet produced by Feeding Pennsylvania in support of its members.

